



Connected Lighting Smart Living

MEGAMAN® INGENIUM® ZB Smart Lighting Solution has developed a range of smart devices of LEDs (lamps and light engines), dimming and main switching modules, sensors and controls to supplement the home automation and make the home and/or commercial spaces more comfortable, convenient and affordable to run. All compatible with our INGENIUM® ZB Gateway.

INGENIUM® ZB Gateway can connect up to 150 compatible smart devices and build a scalable and large coverage in mesh network, and we are adding more devices everyday.

Work Hard & Relax

“ Preset a group of lights to keep them all on/dimming while you combat the other hustles. ”

Good Morning!

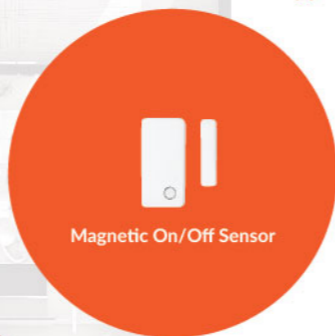
“ Start every morning with a cup of coffee by plugging the coffee maker into our smart socket adaptor and set up a time for brewing. ”

Light Daily Routine

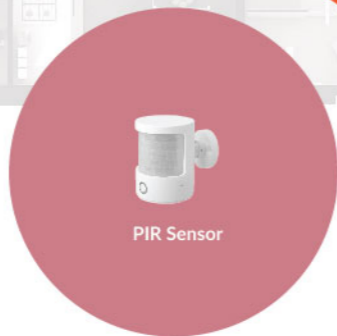
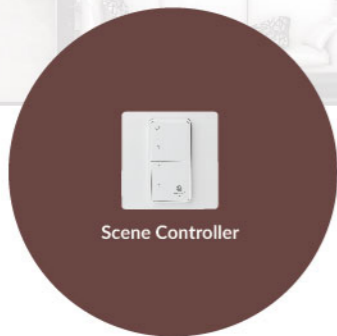
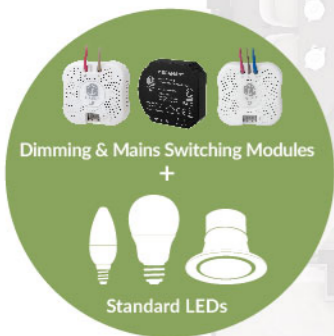
“ Drift off to sleep every morning. Preset to “light on” at 7am to keep you awake. ”



“ Welcome Home
By installing Magnetic On/Off Sensor at entrance door, lights can be set to turn on when you open the door. ”



“ Set Favourite Scenes
Just one touch to transform your living room into a party zone. ”



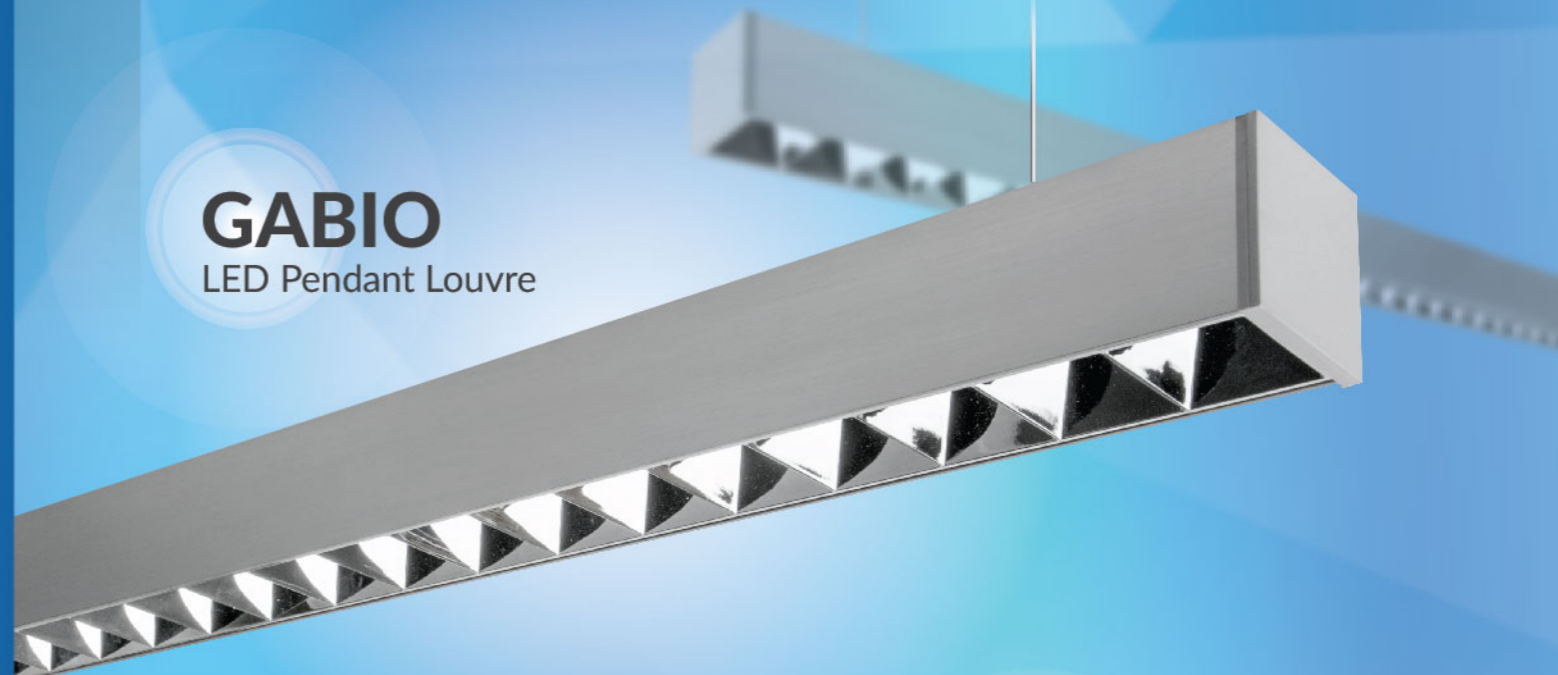
“ Home Theatre
Preset a scene for home theatre mode to set the light level in living room, which creates the ambience for movie night. ”

“ Bath Time
Add PIR Sensor as a trigger device to sense your move, ceiling lamp can automatically turn on when you're stepping toward the bathroom. ”

PRODUCT HIGHLIGHTS

SPRING 2018

GABIO
LED Pendant Louvre



MARCO
Integrated LED Tracklight

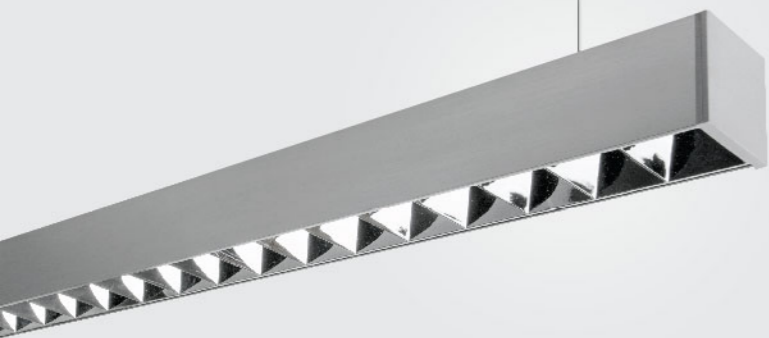


- ESTELA LED Panel
- High Power Luminaires and Lamps
- INGENIUM® ZB Smart Lighting Solutions



GABIO

LED Pendant Louvre



UGR ≤19

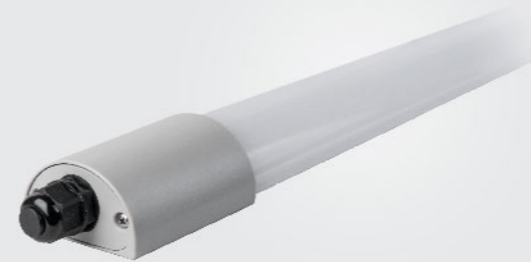
20W 30W
1900lm to 3500lm
90°
3000K 4000K 6500K
Non-Dimmable DALI
L1142 x W57 x H56



Direct lighting

NERO

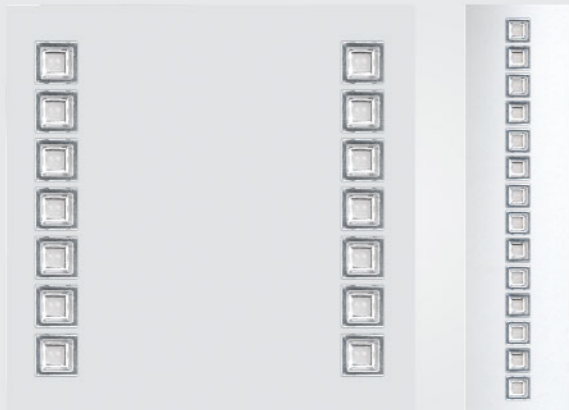
Integrated Waterproof LED Batten



16W	38W	46W
1500lm	4000lm	5000 lm
IP66	IK08	
3000K	4000K	
L570 x W69 x H40	L1170 x W69 x H40	L1470 x W69 x H40

ESTELA

LED Panel



UGR ≤19

27W 30W
3500lm
90°
4000K 6500K
L597 x W597 x H37 L622 x W622 x H37
L1197 x W297 x H37 L1247 x W310 x H37
Switchable / DALI Versions Available

ENSIO

Outdoor Integrated LED Floodlight



90W	180W
11000lm	22000lm
110°	
IP66	IK08
3000K	4000K
Symmetric optics	Asymmetric optics
L296 x W335 x H72	L467 x W335 x H72

* Symmetric / Asymmetric Optics Available

MARCO

Integrated LED Tracklight

MARCO

37W 52W
12° 25° 45°
High CRI up to Ra97
3000K 4000K
3100lm to 5000lm



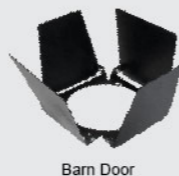
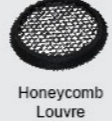
U-DIM

MARCO Mini

12W 13W
12° 24° 36°
High CRI up to Ra97
2800K 4000K
900lm to 1000lm



Accessories



LED CLUSTERLITE®

High Power LED

80W



Up to 4200lm
2800K 4000K 6500K [Ra80]
E27: Ø63mm x 188mm (L)
25000hrs
Passive Cooling

Up to 12000lm
2800K 4000K [Ra80]
E27: Ø80mm x 252mm (L)
E40: Ø80mm x 265mm (L)
25000hrs
Active Cooling

LED R7s

Ideal Replacement for Halogen Counterparts

7W



810m
2800K 4000K [Ra80]
L78 x W31 x H31
Dimmable: 100-2%
25000hrs

8W



1055lm
2800K 4000K [Ra80]
L78 x W31 x H31
Non-Dimmable
25000hrs

13W



1521lm
2800K 4000K [Ra80]
L118 x W31 x H31
Dimmable: 100-2%
25000hrs

15W



2000lm
2800K 4000K [Ra80]
L118 x W31 x H31
Non-Dimmable
25000hrs